

**Need for fence:** 2 dogs that love to run, but would run away without a leash :-)

**Original plan:**

1. Line to proposed: ~5ft
2. House to wetland lines: ~32ft (closest point)



# Wetland and Wetland Change Areas Map

Map Tools



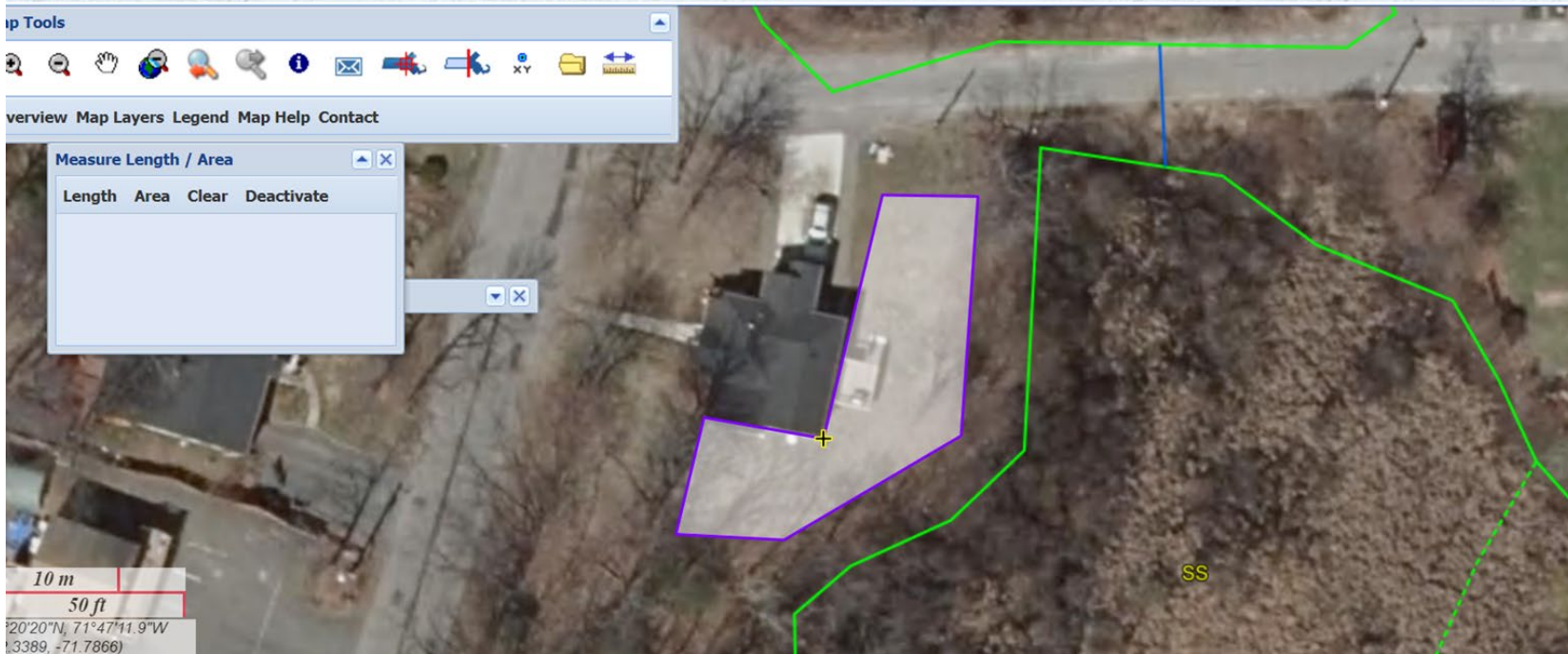
Overview Map Layers Legend Map Help Contact

Measure Length / Area

Length Area Clear Deactivate

--	--	--	--

10 m
50 ft
42°20'20"N, 71°47'41.9"W
(3389, -71.7866)



## New goal for approval:

1. Line to proposed fence: ~15ft
2. Clean up of wetland area behind the house
3. Add wetland specific greens (linked [here](#)) → open to suggestions